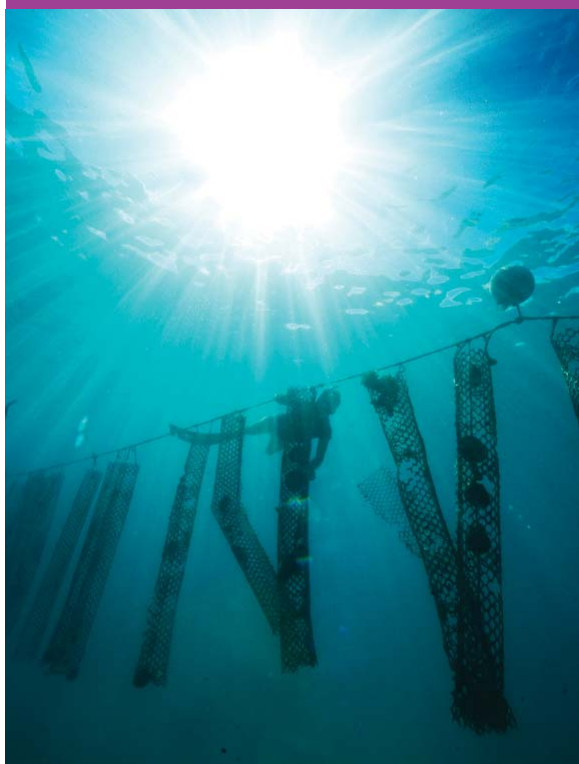




New pearl industry regulation in French Polynesia

Law 2017-16 of July 18, 2017, regulating professional activities
related to production and commercialization of pearl and nacre products of French Polynesia,
and its related implementation decrees

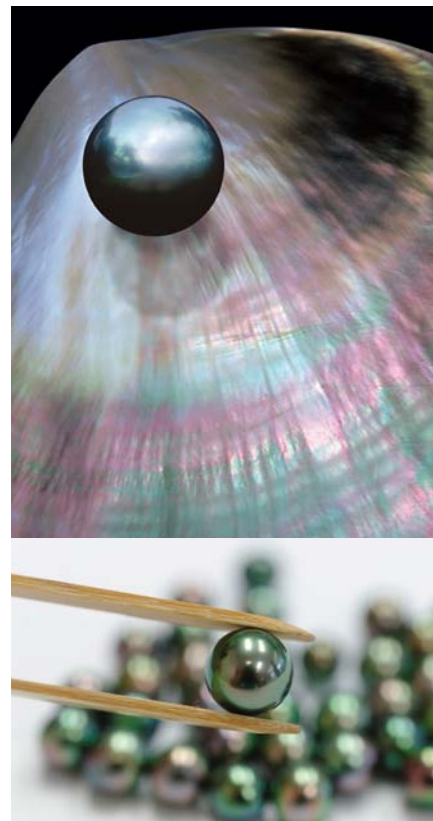


TOGETHER, LET'S WORK FOR SUSTAINABLE PEARL CULTURING

www.ressources-marines.gov.pf

The main orientations of the new pearl farming regulatory framework

- ▶ *Production monitoring and regulating tools, for proper management in a **sustainable development** approach*
- ▶ *Restructuring the pearl industry for a **better organization of production and a controlled supply***
- ▶ *Diversification of French Polynesia's pearl products and certification of the Tahitian cultured pearl, for a **marketing strategy better suited to its markets***
- ▶ *A new type of governance, **placing professionals at the heart of the industry's stewardship***
- ▶ *A renewed partnership between public authorities and private operators for improved transparency and a **more efficient management of the industry***



These new rules aim to ensure the preservation of resources and the optimum organization of the industry, in collaboration with all actors and with respect of our lagoons.

PEARL INDUSTRY ACTORS, YOU ARE ALL CONCERNED!

The redesign of the regulatory framework affects all of the industry's stakeholders:

Pearl products producers	Pearl oyster producers	Pearl oyster growers (hatcheries)		
Nuclei dealers	Merchants	Artisans	Jewelers	Exporters

What should you do?

- You're already active: make sure you comply with the new rules
- You're starting your business: ask for your professional license

Look up all the administrative steps you need to take at
www.ressources-marines.gov.pf

Today's pearl industry is...

- ▶ A **qualitative, sustainable approach** that meets the expectations of target markets.
- ▶ A **visibility** on pearls produced throughout the entire territory.
- ▶ The identification of each stakeholder in the industry, to **better help** their professionalization and the development of their activity.
- ▶ A **stronger dialogue** between the industry's stakeholders, with the creation of a Pearl Farming Council made of professionals who are directly involved in the decision-making process.
- ▶ A strong commitment to **preserve the resource** and to protect the lagoons
- ▶ A **visibility** on pearls sold on both local and international markets
- ▶ The **enhancement** of the entire production with on-request quality certification accessible to all.
- ▶ A **strong international image** of the industry



**ARE YOU
A PEARL INDUSTRY
PROFESSIONAL?**

The Department of Marine and Mining Resources guides you through the administrative process.

For more information:
www.ressources-marines.gov.pf

The main changes

Implementation of law 2017-16 of July 18, 2017 and related decrees

► **Specific professional license:**

Pearls products producers, pearls oysters producers, pearls oysters growers (hatcheries), nuclei traders, pearls wholesalers and retailers (except jewelers) and pearls duty free export companies must have a valid professional license delivered by French Polynesia's authorities.

► **Mandatory declarations:**

All professionals must declare their inventory, their purchases and sales of pearls and nuclei.

► **Importing nuclei:**

A technical notice from the department in charge of pearl farming must be requested before each import operation (import license).

► **Mandatory de-clumping of pearl oysters before transfer:**

Pearls oysters must be detached from their support and de-clumped before being transferred from one lagoon to another.

► **Production quotas:**

A global quota is defined, as well as individual quotas (proportional to the size of the farm, and weighted by variables specific to each producer and lagoon).

► **Environmental limit and management limit:**

These limits apply to the areas where pearl farming is authorized, and to the number of spat collection stations in pearl-producing islands.

► **Tahitian cultured pearls nacre thickness assessment:**

- o Free upon registration for producers
- o Accessible to all and subject to a fee, on request, under certain conditions

► **New governance:**

The pearl farming council, made up of all stakeholders in the industry, favors a participative approach and a genuine involvement in all important decisions. Local management committees are created in each pearl-producing island.

More information at

www.ressources-marines.gov.pf



MARINE RESOURCES AND MINING DEPARTMENT

PO Box 20 - 98 713 Papeete - Tahiti - French Polynesia

T. (+689) 40 50 25 50 - drm@drm.gov.pf

 [ressourcesmarines](https://www.facebook.com/ressourcesmarines) - www.ressources-marines.gov.pf

